

# Navigating Our Vision

## IMPACT AREAS

### CLIMATE, LAND & WATER

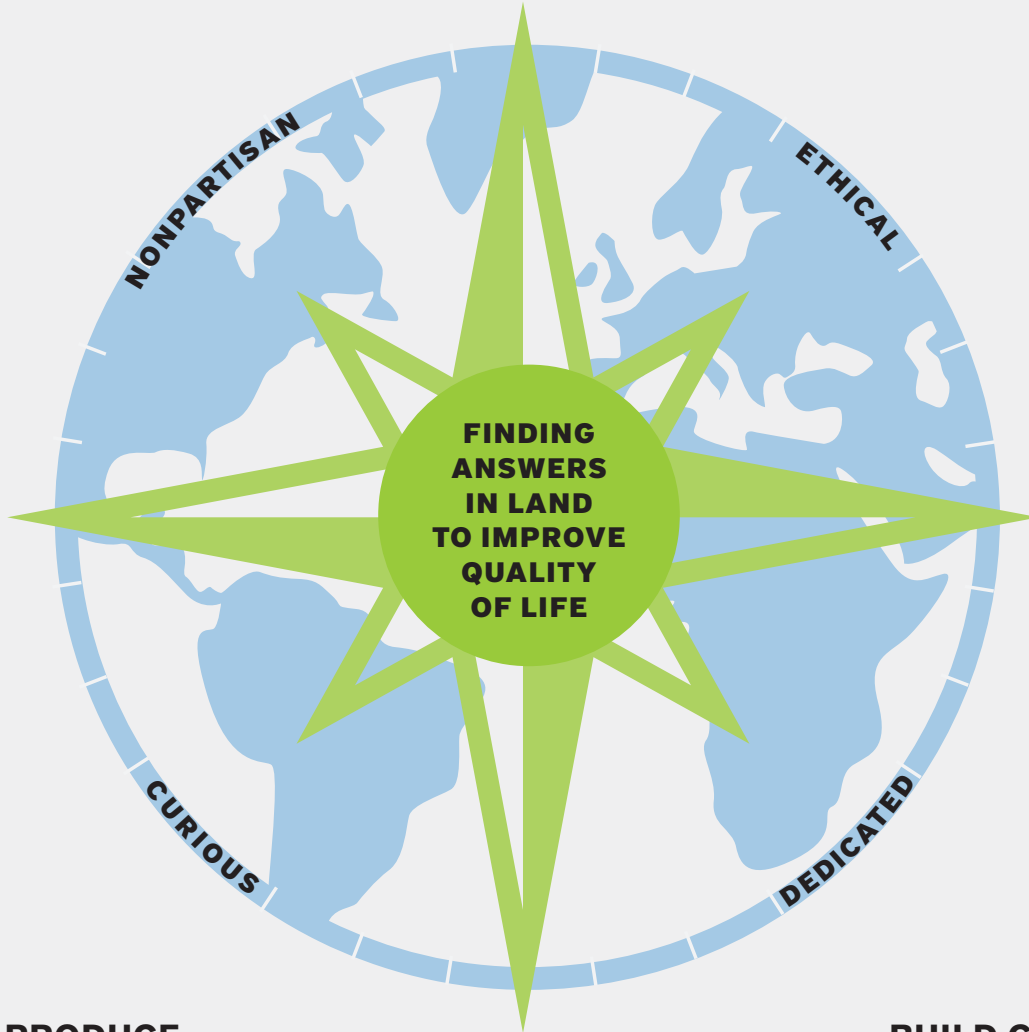
Stewardship of land and water resources ensures a livable future.

### FISCAL SYSTEMS

Prosperous cities and regions provide essential public goods and services through coordinated land use planning and public finance.

### LAND & OPPORTUNITY

Efficient and equitable allocation of limited land resources supports thriving communities.



### GROW & PRODUCE

Grow the field of land policy research, and produce quality data and findings.

### FOSTER RECOGNITION

Foster recognition of land policy as a tool to address important social, economic, and environmental challenges.

### BUILD CAPACITY

Build the capacity of decision-makers and practitioners to create and implement effective land policies and practices.

## STRATEGIES

### What Is Land Policy?

Land policy defines the relationship between people and place. It helps us reconcile competing interests between private landownership and the public good.

# How We Navigate Our Vision

## GROW & PRODUCE

**Grow the field of land policy research, and produce quality data and findings.**

- Produce and collaborate on policy-relevant research and publications
- Cultivate expert networks to share findings and best practices
- Nurture emerging researchers through fellowships and scholarships
- Build and deliver effective curricula based on research and practice

## FOSTER RECOGNITION

**Foster recognition of land policy as a tool to address important social, economic, and environmental challenges.**

- Convene decision-makers and practitioners around key issues
- Expand and inform audiences through strategic communications
- Develop creative approaches to expand knowledge and understanding of the importance of land policy and planning
- Inform active public policy debates

## BUILD CAPACITY

**Build the capacity of decision-makers and practitioners to create and implement effective land policies and practices.**

- Focus on decision-makers in local, state, and national levels of government
- Create and disseminate accessible data, tools, and analysis to support effective policy decisions
- Educate and train decision-makers and practitioners
- Facilitate connections among decision-makers, practitioners, and other experts
- Provide technical assistance
- Build communities of practice