



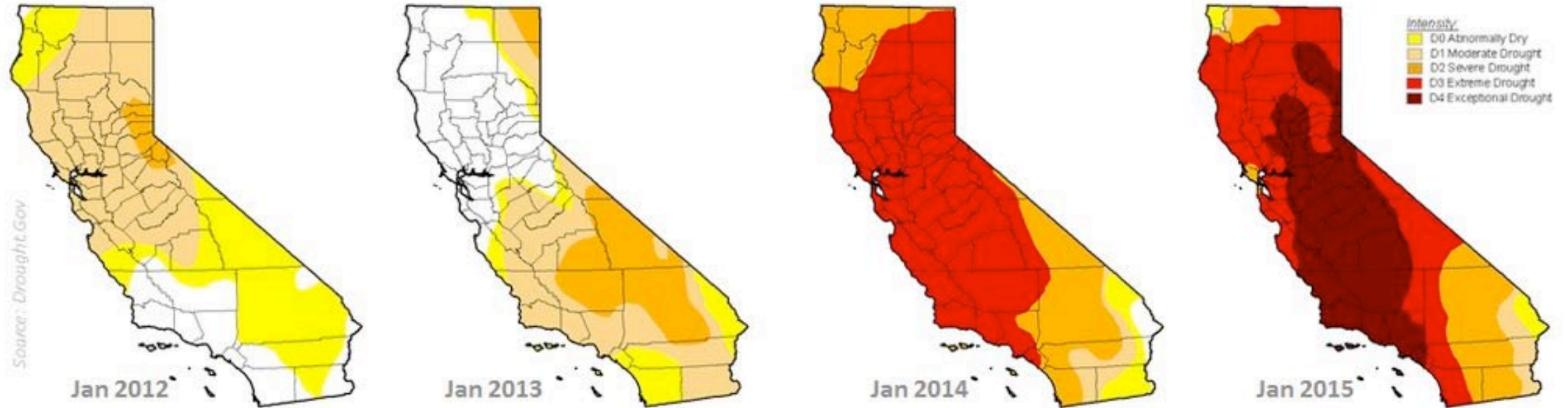
Shhhh!!!! Linking Land and Water with California's Sustainable Groundwater Management Act

Andrew Fahlund, Senior Program Officer

March 29, 2019



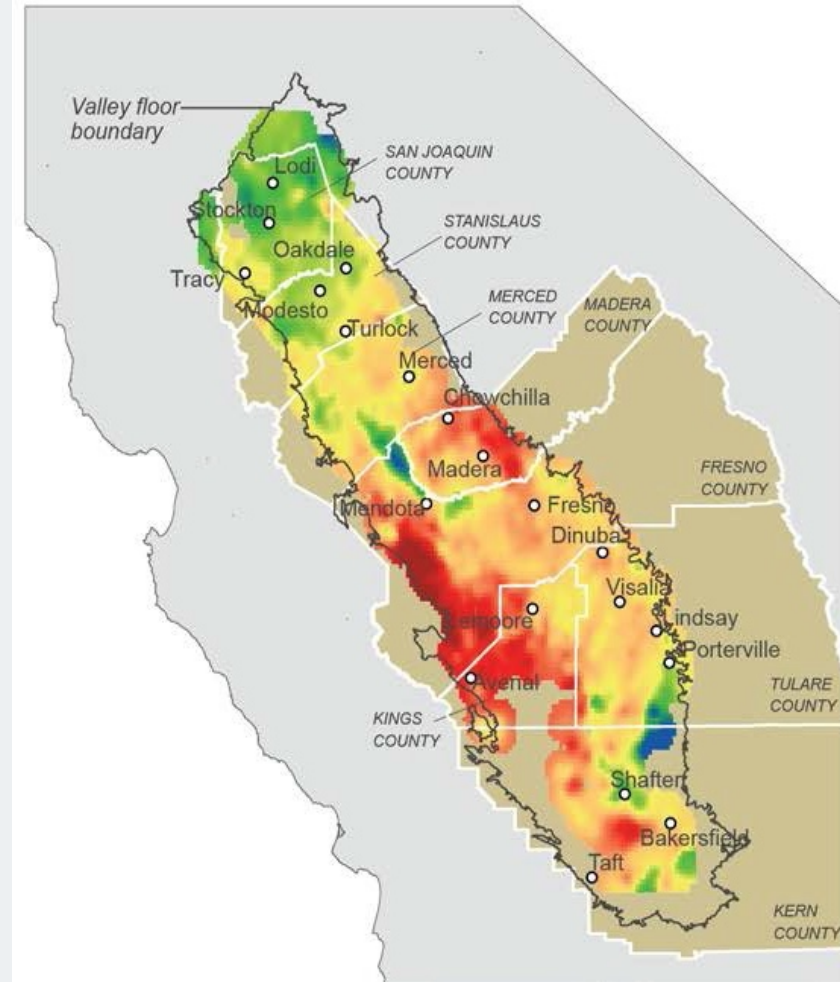
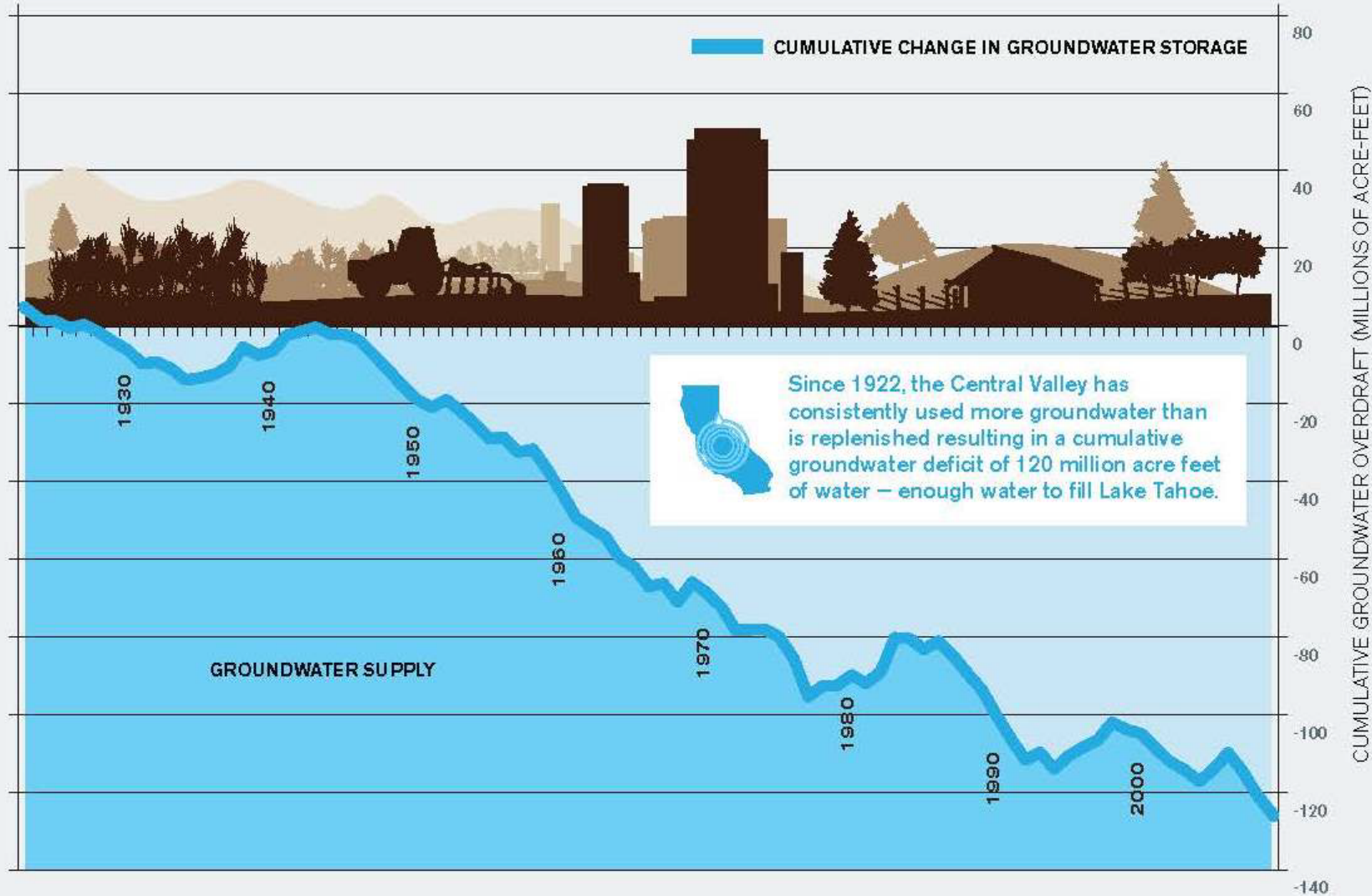




The drought of the century focuses attention.

A Crisis Tied to Land Use

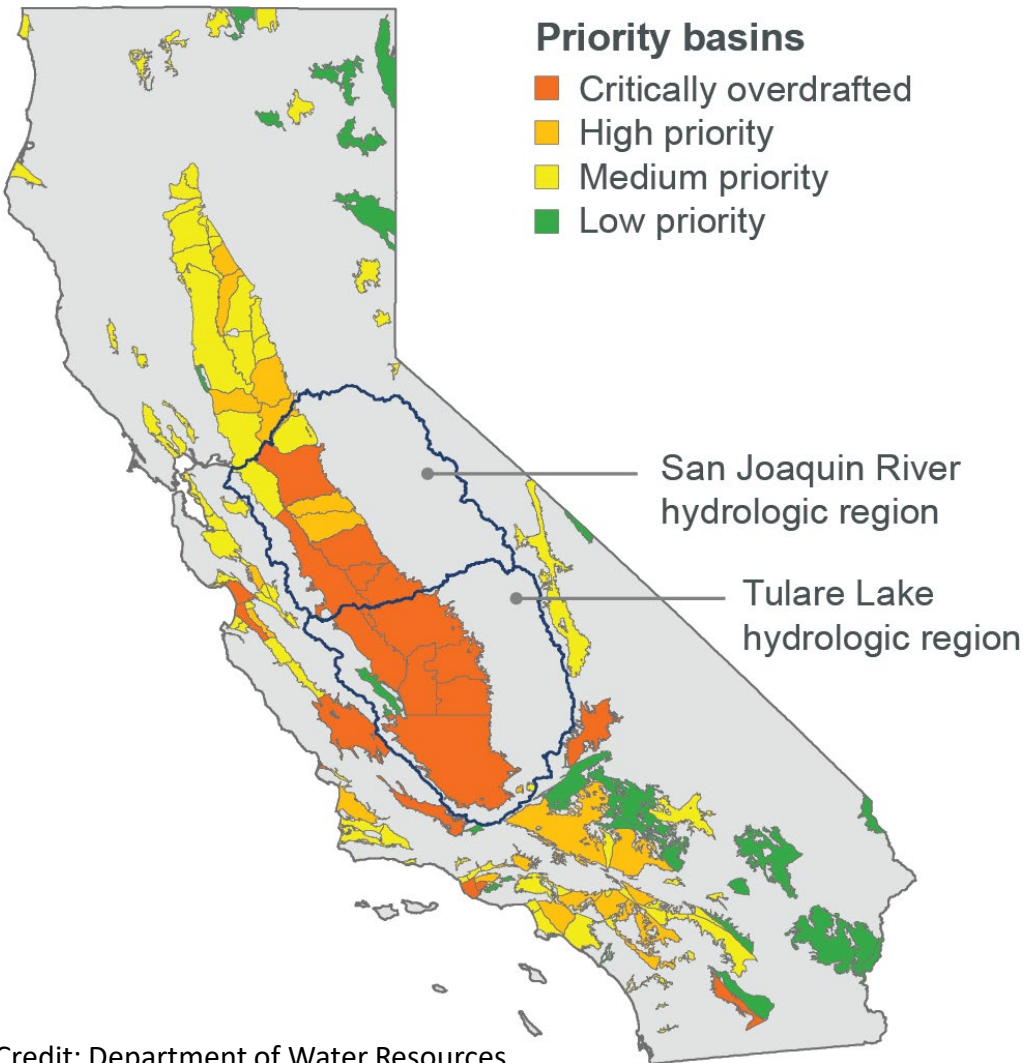
Central Valley's Cumulative Change In Groundwater Storage Since 1922



Groundwater in the Headlines?



Sustainable Groundwater Management Act (SGMA)



- **Empowers local agencies** to determine an appropriate local goals for sustainability and provides them with the tools to enforce them by establishing a water budgets that avoid long-term harm.
- **Requires development and implementation of plans** that set water budgets and management requirements which achieve sustainability by 2040.
- **Establishes the State as a backstop** that directs the State Water Resources Control Board to assume control over any groundwater basin that fails to meet the requirements and schedule of the Act.



Regulates 90% of all groundwater pumped in the State.

SGMA as a Land Use Tool?



- **65352.5. REQUIREMENT TO PROVIDE WATER-RELATED DOCUMENTS TO GENERAL PLAN AGENCY** (a) The Legislature...declares that...there be close coordination and consultation between California's water supply or management agencies and California's land use approval agencies...
- **10726.2. ADDITIONAL AUTHORITIES OF GROUNDWATER SUSTAINABILITY AGENCY** (c) Provide for a program of voluntary fallowing of agricultural lands or validate an existing program.
- **10726.8. RELATIONSHIP OF THIS PART TO OTHER LAW** (f) Nothing in this chapter or a groundwater sustainability plan shall be interpreted as superseding the land use authority of cities and counties, including the city or county general plan, within the overlying basin.

Anticipated Land Retirement: San Joaquin and Tulare Lake Basin



Image Credit: The Nature Conservancy



Image Credit: The Nature Conservancy



Andrew Fahlund
afahlund@waterfdn.org
(916) 414-3303

WATER
FOUNDATION